



The Measure of Quality.

What's inside **your** coating station?

Profits *or* **Problems?**

Welcome to the Next Generation Anilox- & Metering Rolls for the Offset industry!

Start your own coating quality revolution

- *Boost your Profitability*
- *Achieve Smooth and Consistent Coating Results*
- *Plug & Play Convenience*
- *Lightweight Roll Changes*
- *ReadyRoll Prompt In-Stock Delivery*



Solutions for Offset Coating

Offset professionals know that coatings and varnishes can bring a printed piece to life- or ruin it.

Orange-peel and pinholing can diminish even the finest, tightest-register multi-color job. But most printers don't realize they have options to boost quality, predictability and profitability in their lacquer-transfer anilox rolls. With Apex, now the choice is yours. Tested, approved and recommended by leading press manufacturers, our **UltraCell** and revolutionary **GTT** coating rolls deliver quality, reliability and profitability for all of your coating requirements.

All Apex UltraCell and GTT Coating rolls share these common benefits:

LIGHTWEIGHT

Our strong, lightweight aluminium-core base (produced according to OEM standards) enables safer, faster roll changes and handling.

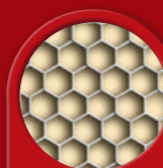
PLUG & PLAY PERFORMANCE

Right out of the box, your roll is press-ready, including bearings, tooling and mounting.

FAST DELIVERY

Our stock program ensures the most frequently-used roll sizes to be in-stock, awaiting your order.

APEX CONVENTIONAL ANILOX ROLLS ARE AVAILABLE IN ALL LASER-ENGRAVING GEOMETRIES



30°-60°
HEXAGONAL



ELONGATED
HEXAGON



POSITIVE
ENGRAVING



TRIHEDRAL

AND MORE!

CONVENTIONAL

UltraCell Anilox Rolls

PRECISION • DURABILITY • RELIABILITY

Apex **UltraCell** anilox rolls are deliverable in all requested engraving specifications.

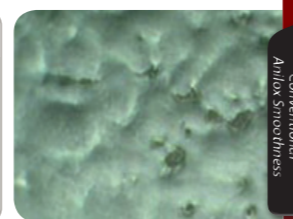
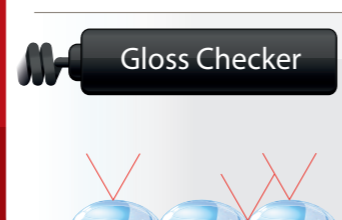
CERAMIC SURFACE

Homogenous and compact ceramic with a porosity less than 1% without using any sealer and post treatment.

ULTRAMELT LASER ENGRAVING

All conventional anilox rolls are engraved with a pulse laser, using the UltraMelt technology, a method that melts the ceramic after engraving, resulting in a smooth ceramic layer.

Micro-photographs compare lacquer surface smoothness in conventional **UltraCell** hexagonal cell anilox and **GTT^{OFFSET}**. While uniform lacquer application is assured with all Apex rolls, **GTT** maximizes consistent quality and minimizes pinholing, orange peel and other common coating complaints.



Conventional
Anilox smoothness

ADVANCED

GTT^{OFFSET} Metering Rolls

THE OFFSET COATING REVOLUTION

Apex **GTT^{OFFSET}** rolls are nothing short of a revolution in quality coating transfer.

OPEN SLALOM CHANNEL

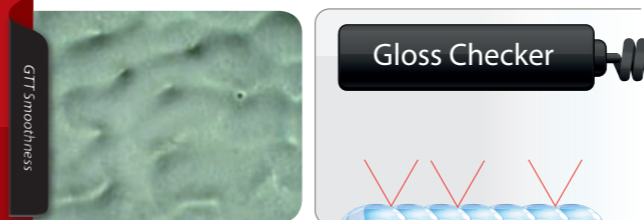
Sets your coating free and avoids turbulence and foaming.

CONSTANT BEAM LASER ENGRAVING

Our continuous laser process creates a consistent and precise channel. This proven, patented technology guarantees a controlled coating transfer.

SUPER-HARD HYBRID CERAMIC

Apex GTT hybrid ceramic layer uses 80% CrO2 and adds 20% Titanium Dioxide particles, which minimizes porosity.



GTT Smoothness

Customer Quotes

"My print quality has gone up, because of the smooth and equal coating layer"

"I used the same amount of coating and the number of gloss points increased enormously while using GTT L"

"I save a lot on coating and achieve the same result"

Start your own coating quality revolution with **GTT**

Maximize your visual coating results

- Enjoy a smoother coating surface and a homogenous laydown
- Experience more gloss
- Solve pinholing, orange-peel effect and micro-foaming

Boost your profitability

- Coating savings!
- Higher efficiency, because of rare roll changes.
- Better margins due to a higher value print work.

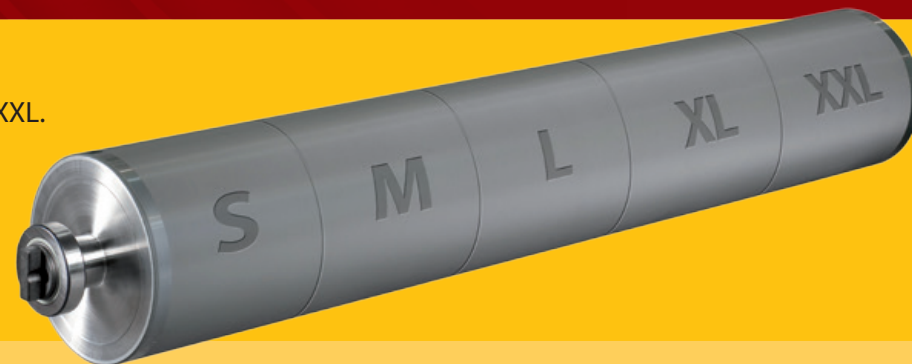
Universal GTT profile selection

- L Profile : applicable for 80% of all water based coatings
- M Profile : more economical print of water based coatings
- S Profile : special applications (ex. Silver, Gold, etc)
- XL Profile : best results in UV coatings
- XXL Profile : even more optical UV gloss.



Banded Roll Program for GTT Profile Selection

There are 5 standard profiles available in the **GTT^{OFFSET}** range: S, M, L, XL, XXL. It is very easy to make a selection, dependent on your application. If you are not certain which profile suits your application best, you can make use of the live banded roll test. Apex holds several banded rolls in stock for most of the common machine types. Ask your local contact for more information on this unique service.



Coating Calculator

"What is my actual coating transfer?" This is an often raised question by many offset printers. Apex created a calculator which gives an advice on how to achieve the optimal wet transfer result through different cell patterns. This convenient tool makes the selection for your application as easy as possible. It can be found on our website: www.apex-groupofcompanies.com/coatingcalculator.

Scan this QR-code and download the Coating Calculator!



About Apex Group of Companies

Apex Group of Companies is the world's largest manufacturer of precision coating- and ink-transfer technology products. Apex supplies anilox/metering rolls and bridge/plate sleeves for offset, label, flexible packaging, corrugated and industrial coating applications. Apex products are tested, approved and deployed by all leading press manufacturers in the offset and flexographic industries. Reliability, durability, innovation and precision are hallmarks of all Apex products. With manufacturing and sales operations on six continents in more than 80 countries, Apex provides added value by supplying customers with end-to-end anilox or GTT solutions including measurement devices, cleaning and maintenance products, and educational/use-and-care seminars. Ask your local sales person for more information or contact the Apex Offset department at offset@apex-europe.com



www.apex-groupofcompanies.com

The Measure of Quality.

HEADQUARTERS

APEX EUROPE

Metalweg 8
5527 AK Hapert NL

T +31 (0) 497 36 11 11

E info@apex-europe.com

W www.apex-groupofcompanies.com

PRODUCTION FACILITIES

APEX EUROPE

T +31 (0) 497 36 11 11

E info@apex-europe.com

SALES OFFICES

APEX ASIA

T +65 (0) 6284 7606

E apexasia@singnet.com.sg

APEX ITALY

T +39 0331 379 063

E info@apex-italy.it

APEX DEUTSCHLAND

T +49 (0) 2823 929360

E info@apex-deutschland.de

APEX LATIN AMERICA

T +55 (41) 3677 2678

E info@apexlatinamerica.com

APEX FRANCE

T +33 (0) 475 46 39 42

E sales@apex-europe.com

APEX NORTH AMERICA

T +1 (0) 724 379 8880

E info@apexnorthamerica.com

APEX IBÉRICA

T +34 93 583 10 12

E spain@apex-europe.com